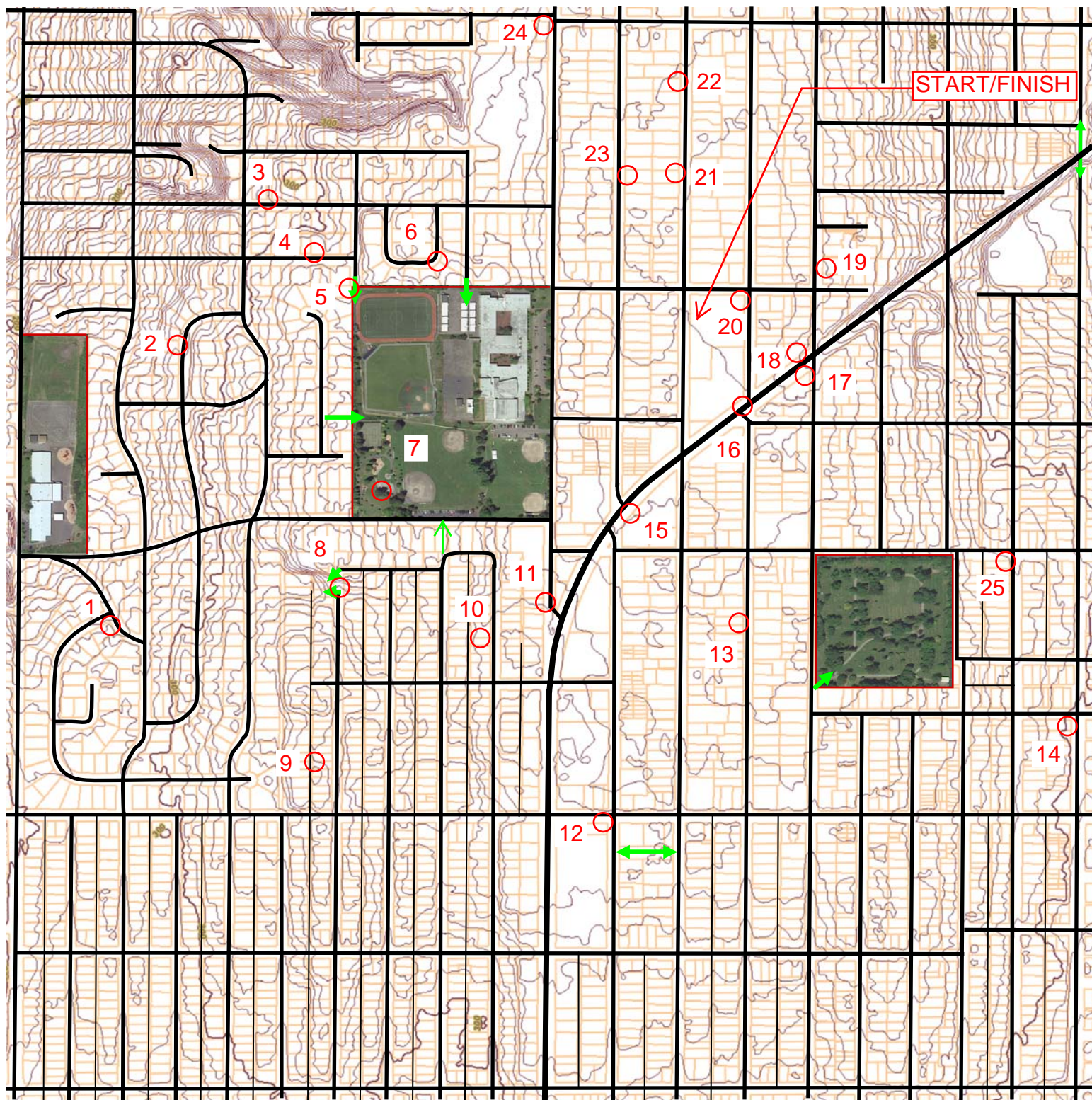


# the 'hood hunt: crown hill

a neighborhood scavenger hunt on 4/9/2011



0 miles 0.25 0.50 0.75 1.0

- street
- alley
- ↔ access point
- contour (5 feet)
- property line
- no access

map boundaries: NW 100<sup>th</sup> street (north)  
NW 80<sup>th</sup> street (south)  
8<sup>th</sup> ave NW (east)  
24<sup>th</sup> ave NW (west)

↑ north