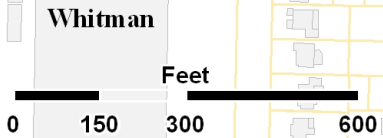
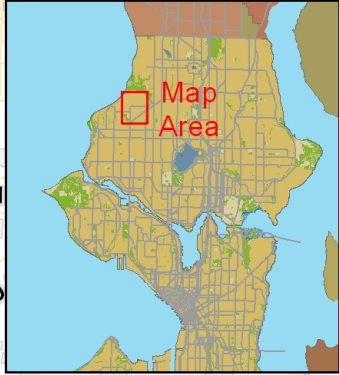
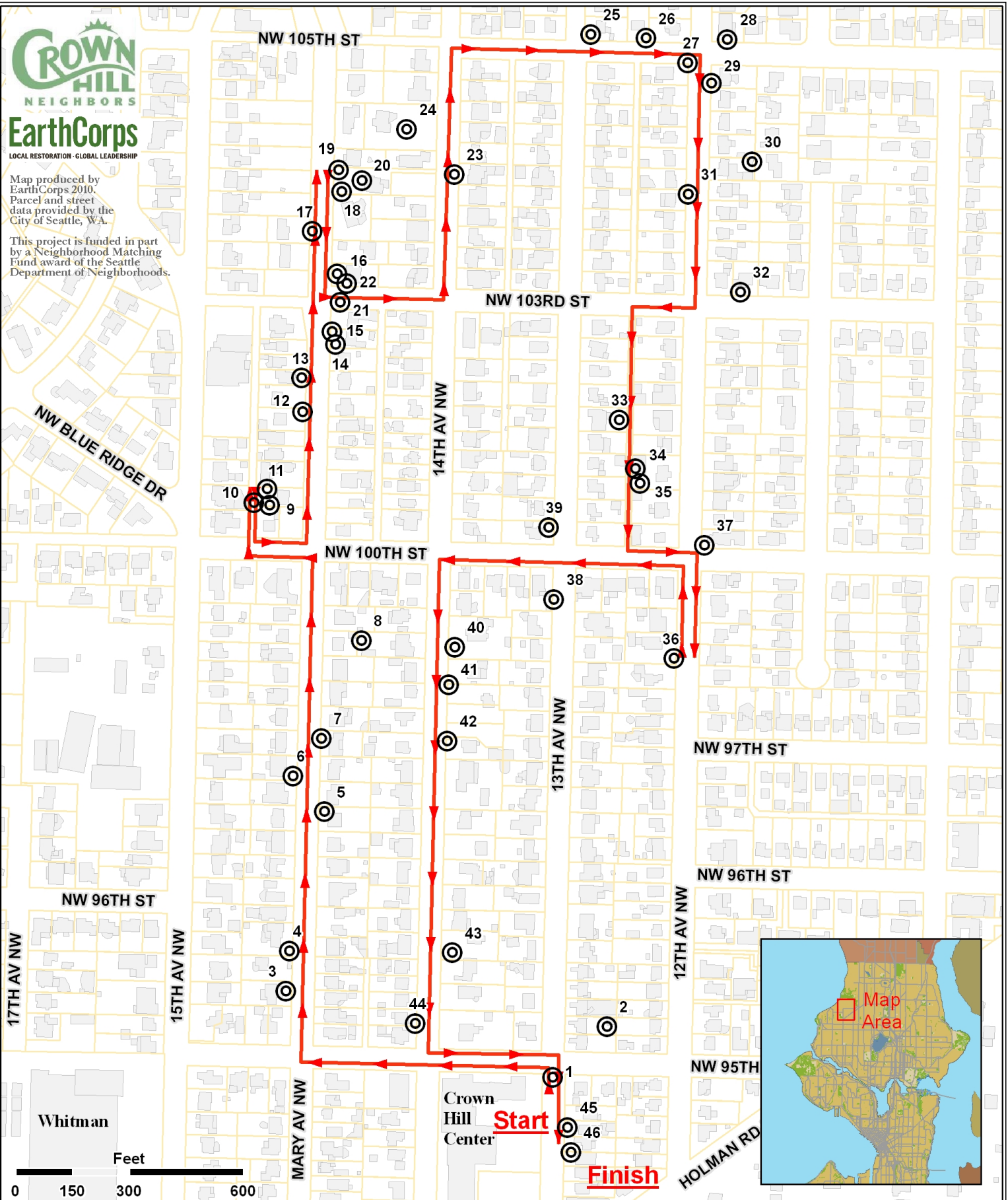


Map produced by EarthCorps 2010. Parcel and street data provided by the City of Seattle, WA.

This project is funded in part by a Neighborhood Matching Fund award of the Seattle Department of Neighborhoods.



Crown Hill Tree Walk 1

2010

- Legend**
- Trees: See back for descriptions
 - Parcel Boundary
 - Walking Route
 - Buildings



Key to Trees in Crown Hill Tree Walk

- 1. Red Oak at Crown Hill Center:** Tree is at the SW corner of 13th and 95th. 55' tall. Several people nominated this tree as a favorite.
- 2. Ponderosa pine** – 9506 13th: In the back yard. At 80', not the tallest in CH, but it has the largest trunk, with a circumference of 11'6".
- 3. Two young madrones** - 9515 Mary: These are very healthy compared with most other Seattle madrones.
- 4. Noble fir** – 9521 Mary: This tree isn't doing so well. Compare this to the healthy one growing in more suitable conditions later in the tour. Noble firs are native to the Cascades & coastal mountains of OR/WA. They need more water than they normally get in Seattle yards. Note the Blue Colorado Spruce to the right at 9531.
- 5. Coast redwood grove** - 9610 Mary: 3 of 4 are on one property; 1 is across the street. These are at the SE end of a larger, kind of dispersed grove: one is to the NW on Mary, and two are in Swanson's.
- 6. Douglas fir** – 9627 Mary: We think this is the Douglas fir with the largest diameter in Crown Hill. Most of our houses here are built out of wood from this tree.
- 7. Scots pine** – 9702 Mary
- 8. English walnut** – 9722 Mary: 54.5' and very healthy. This is actually in the back yard of 9723 14th. This tree makes quite a racket when the walnuts are ripe and fall on the roof of the garage.
- 9-11: (9) Douglas fir, 97' tall; (10) Western hemlock, 85'; (11) Eastern hemlock, 49'**: Back yard of 10015 Mary. Walk up the alley to the north and compare these three trees from a distance. E. hemlocks are stouter, denser and less graceful and lush than our native W hemlock, and they have a duller hue. Take a mental picture: At the end of the tour we will see a very rare (for Seattle) Carolina hemlock, and a nice mountain hemlock can be found on the corner of 13th and 90th.
- 12. Siberian elm** - 10031 Mary: Multi-trunked
- 13. Purple leaf plums** – 10041 and -47 Mary: At least they were purple leaf plums—Possibly have reverted to the green leaf root stock on which it was grafted.
- 14. Gold twig willow** – 10052 Mary
- 15. Austrian pine** – 10052 Mary
- 16. Madrone** - 10306 Mary; A bit sickly
- 17. Japanese maple** – 10315 Mary: Spreading, multi-trunked, along the road
- 18-20: (18) Noble fir, 87.5; (19) White pine; (20) Scots Pine** 10327 14th: Noble: Very healthy, especially compared with the other larger specimens in CH. The ground around it is undisturbed. There could be some seepage because it appears to be getting plenty of water. At the time of the survey it had an incredible number of huge cones. Arthur predicted it would need to rest the next year (and not produce so many cones). White pine: At 101', we think this is the tallest of all the WP's we surveyed.
- 21. Alder:** At top of stairs on the 103rd dead end. This is the only alder we noticed during our survey. There were probably some in yards along the creeks which we were unable to see, and there are many in CH's numerous ravines.
- 22. Crabapple** – 10306 Mary: Looking at alder, it is behind you
- 23. Paul's Scarlett hawthorn** – Street trees from 103rd to 105th
- 24. Big leaf maple** - 10335 14th: Biggest trunk among maples in the survey.
- 25. Downey birch** - 10502 13th
- 26. Western Larch** - 1212 105th: In Arthur Lee Jacobson's *Trees of Seattle* (TOS). 51.5'
- 27. Western hemlock** – 10357 12th
- 28. Small tulip tree** – 10504 12th: Stop by this to get a close up view of the leaves. In a couple minutes you'll pass a much larger one, but you can only view it from a distance.
- 29. Norway spruce** – 10354 12th
- 30. Big tulip tree:** In back yard of 10332 12th.
- 31. Redwood** – 10323 12th: Strange tapered shape
- 32. Tree of Heaven** – 1118 103rd: A female
- 33. Grove of nice cedars** – 10034 13th (alley)
- 34. Irish Yew** – 10023 12th (alley)
- 35. Black walnut** 10023 12th (alley); Two trees
- 36. Weeping cherry** - 9725 12th: In TOS. If you were to buy at a nursery it would be grafted on a European cherry, which shortens its life span. It would be better to grow from the seed of this tree.
- 37. Pacific dogwood** – 1120 100th: SW corner of yard. These have two beautiful blooms. It has become rarer to find these natives. People tend to plant hybrids these days.
- 38. Grand fir** - 1303 100th: This is only a medium-sized specimen for Crown Hill, but you can reach the needles. Crush them – they have a tangerine odor.
- 39. Japanese angelica** – 10001 13th
- 40. Old orchard** - 9724 14th
- 41. Lawson cypress** - 9708 14th: Two different cultivars
- 42. Lombardy poplars** – 9628 14th: These three trees mark the spot where Ballard Tree used to be. There were five until only very recently.
- 43. Butternut Walnut** - 9530 14th: A WA State champion. At 81' tall, this tree can be found in Champion Trees of Washington State, as well as Trees of Seattle (the others listed in TOS are 64', 59', 39' and 46'). In the wild they are being wiped out by a disease.
- 44. Dawn redwood** – 9509 14th: Remarkable squat shape. Once thought extinct, this prehistoric tree normally grows straight up.
- 45. Mimosa or pink acacia** - 9244 13th: Some say the flowers smell like watermelon.
- 46. Carolina hemlock** – 9240 13th: This is the only known specimen in the entire City. This has much bigger cones than E and W hemlocks. Also note the elegant branch structure, which also sets this species apart.